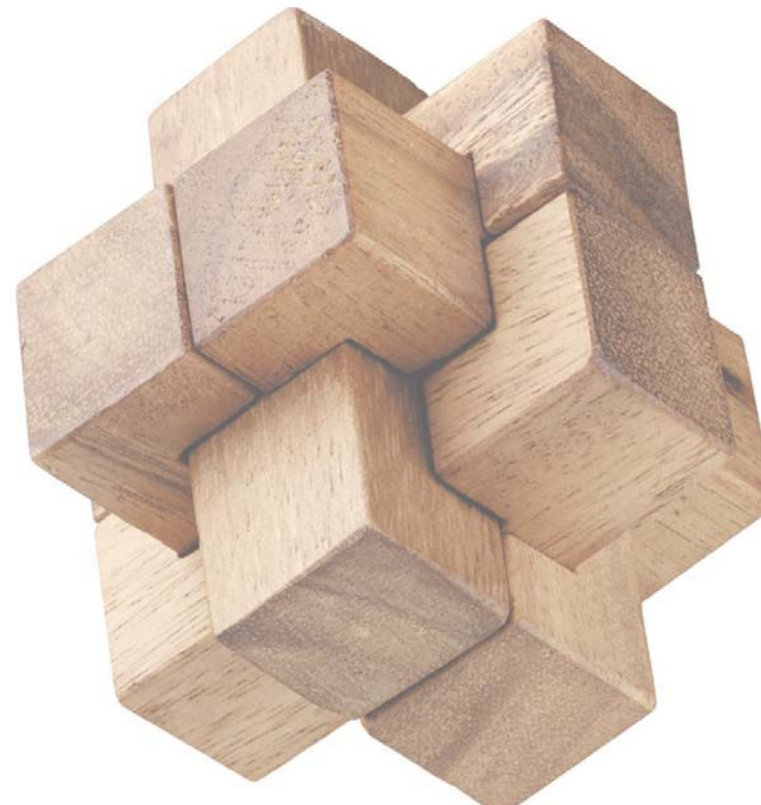


225 E_AST 138th S_TREET
B_RONX, N_Y





3 225 E_{AST} 138th S_{TREET}



MATERIAL A

MATERIAL B



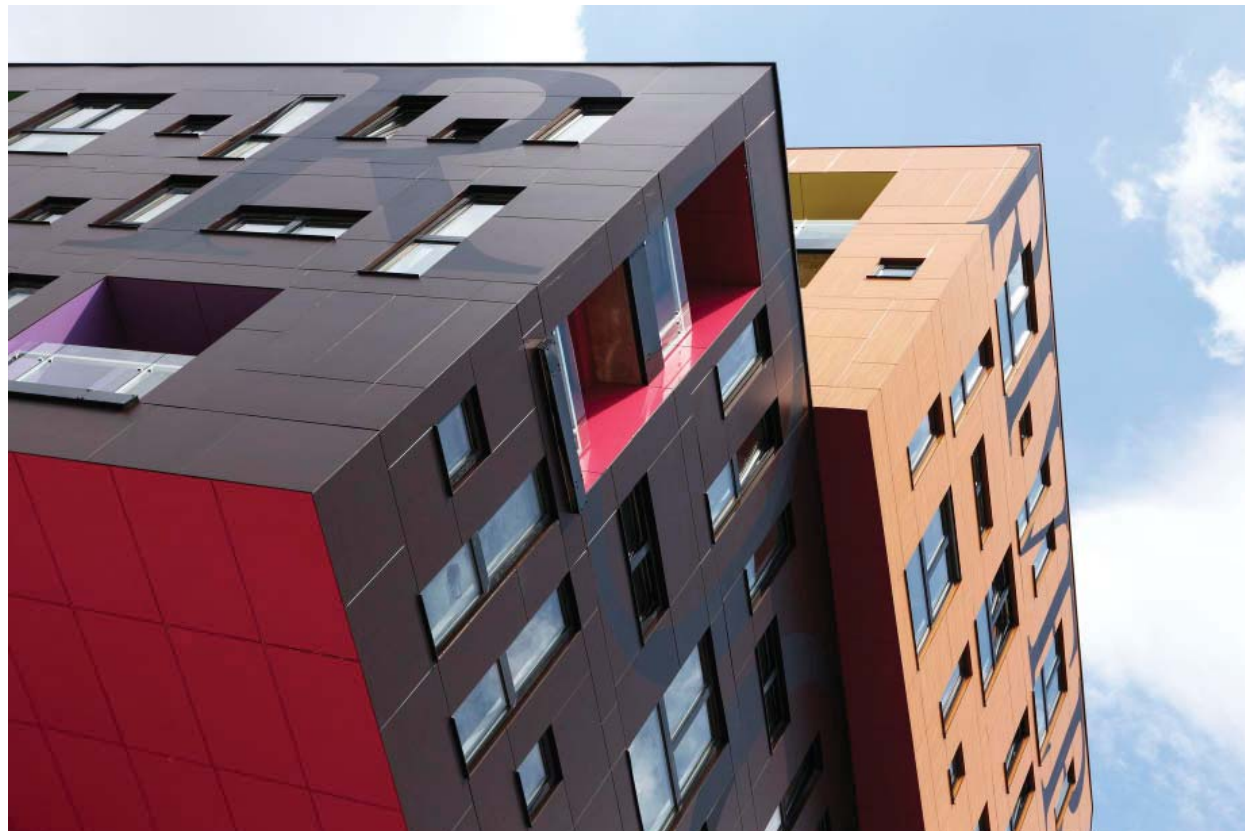


LIGHT MASONRY AND DARK PANEL - SMOOTH VS. ROUGH TEXTURE - JUXTAPOSITION OF FORMS





EXPRESSION OF WINDOWS



EXPRESSION OF BALCONIES AND CEILINGS



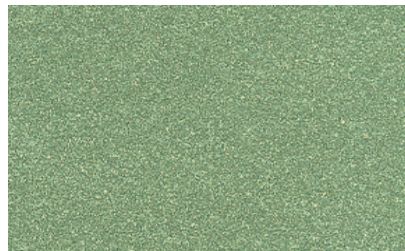
FACADE 1 - BRICK



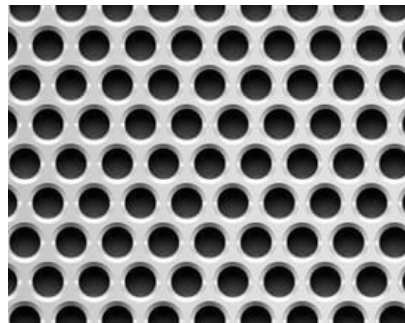
ACCENT 1- TRESPA WOOD



FACADE 2 - TRESPA MATTE



ACCENT 2 - TRESPA METALLIC



RAILINGS

